

Wall Cavity Fire Barrier

Fire and Smoke Barrier for masonry cavity walls.



Installation Guidelines

PRODUCT

AIM Wall Cavity Fire Barrier is made from foil faced high density Rockwool stone wool and is suitable for use in all masonry cavity walls, as well as for fire stopping between a curtain wall system and a concrete floor slab. The barrier prevents the passage of heat, flame and smoke within the cavity it fills for one or two hour fire rating periods.

PHYSICAL INFORMATION

AIM Wall Cavity Fire Barrier cut to size

- Lengths: 1000mm
- Thickness: 75mm or 100mm
- Foil Facing (with AIM logo)
- Cavity widths: 50 - 400mm (barrier to be compressed by 5%)
- Faced with reinforced aluminium foil for enhanced smoke resistance

AIM Wall Cavity Fire Barrier Slab

- Slab thickness: performance
 - 75mm: 60 minutes
 - 100mm: 120 minutes
- Slab size: 1000 x 600mm and 1000 x 1200mm
- Foil facing imprinted with AIM logo.
- Available polythene sleeved when supplied pre-cut to size

STORAGE

Cut product is supplied in cartons on pallets, slab products are supplied on wooden pallets with edge protection and a shower proof hood. Products should be stored away from the elements until ready for installation.

HEALTH & SAFETY

Insulation products supplied by AIM are considered to be inert articles and as such are exempt from requirements to provide a Safety Data Sheet. A safety handling information sheet is available upon request.

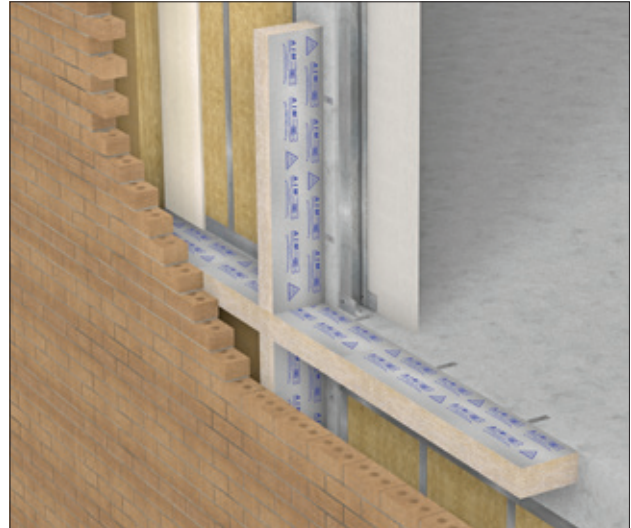
A Product Safety and Handling Information Sheet is available upon request.

COMPONENTS available from AIM

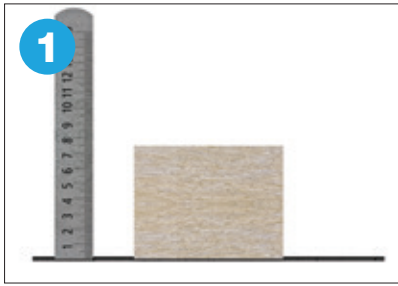
- Wall Cavity Fire Barrier Fixing Brackets
- Acrylic fire rated intumescent mastic (optional extra)
- Barrier either cut to size or in slab format

ITEMS REQUIRED FOR INSTALLATION

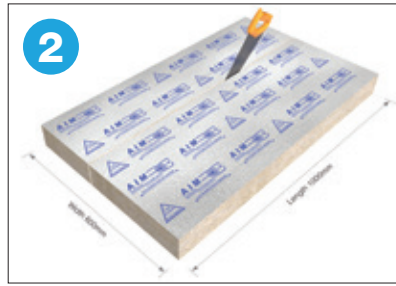
- PPE abrasion resistant gloves
- PPE impact resistant goggles
- RPE dust mask
- Acrylic fire rated intumescent mastic (optional extra)
- Tape measure
- Sharp knife
- Tape measure



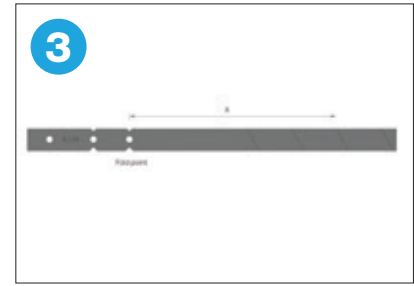
INSTALLATION GUIDELINES



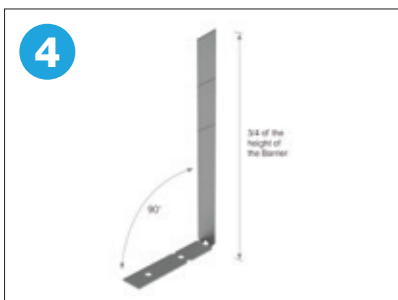
Check that the Wall Cavity Fire Barrier is the correct thickness for the cavity. The barrier should be 5% larger than the cavity.



Measure the cavity depth and add 5%. Mark the slab and carefully cut using an insulation saw or hand saw. Please cut in the direction of the arrows printed on the foil facing. Note: This step is not required if installing Wall Cavity Fire Barrier cut to size.



Snap the fixing clips to the correct length. Dimension X should be three quarters of the barrier's height.



Form two fixing clips to 90° to form an L shape.



Insert two fixing clips into the barrier at 500mm centres approximately 250mm from each end.



Hold the section of barrier tightly against the abutting section and secure the barrier to the substrate.



If the barrier is being used at the perimeter of a concrete floor slab, fit the barrier so it sits level with the top of the floor slab. Fold the clips over and secure them to the top of the slab.



Check for any gaps between the barrier and substrates. All gaps should be fully sealed with fire rated intumescent mastic.



Foil tape should be applied to the upper surface in cavities 250mm to 400mm.

MAINTENANCE

This product does not contain moving parts and, if undisturbed in the cavity, requires no routine inspections or maintenance.

It is recommended that the integrity of the barrier is rechecked if further works are carried out, which may involve disturbing the product.