

Party Wall Fire Closers

Prevents the passage of fire, smoke and sound in all three directions at the party wall junction.



Installation Guidelines

PRODUCT

AIM Party Wall Fire Closers are semi-rigid Rockwool stone wool laminated to a polythene DPC. They have been designed to provide at least one hour resistance to the spread of fire and smoke in all three directions at the party wall junction. It also significantly reduces flanking sound transmission within external wall cavities.

PHYSICAL INFORMATION

- Thermal Conductivity: $\lambda = 0.034\text{W/mK}$
- Rockwool stone wool insulation
- Length: 1200mm
- Width: 260mm – bespoke widths available upon request.
- Thickness: 50, 65, 75, 90, 100 – bespoke thicknesses available on request.
- DPC Polythene conforming to BS6515 (1984)
- DPC Length: 1300mm
- DPC Side Overlap: 40mm non-standard DPC offsets and widths available.
- DPC End Overlap: 100mm

STORAGE

Products are supplied in cartons on wooden pallets with edge protection and a shower proof hood. Orders can be supplied without cartons on request. Products should be stored away from the elements until ready for installation.

HEALTH & SAFETY

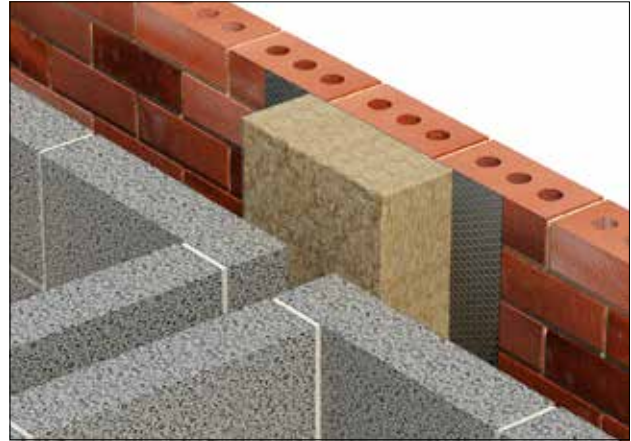
Insulation products supplied by AIM are considered to be inert articles and as such are exempt from requirements to provide a Safety Data Sheet. A safety handling information sheet is available upon request.

COMPONENTS available from AIM

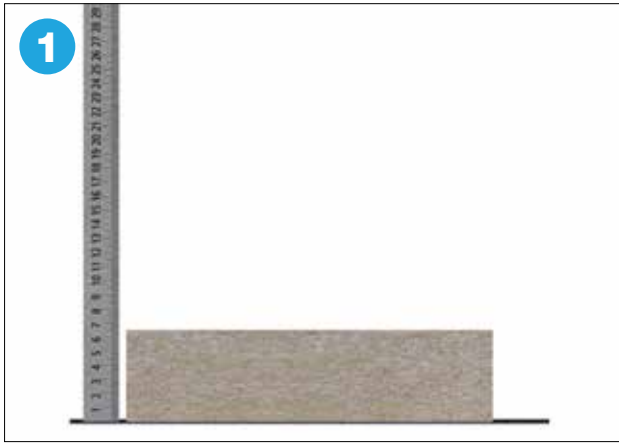
- Barrier
- Acrylic fire rated intumescent mastic (optional extra)

ITEMS REQUIRED FOR INSTALLATION

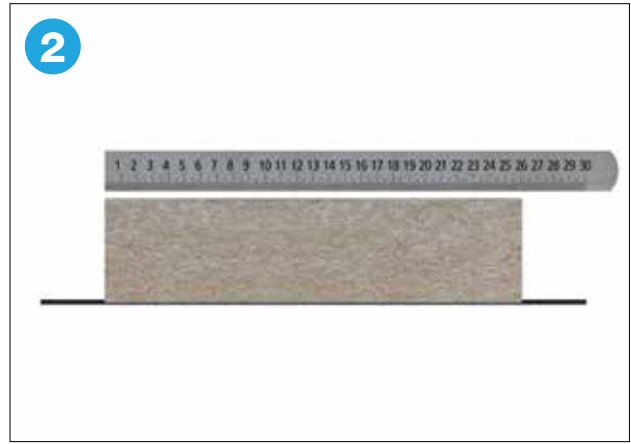
- PPE abrasion resistant gloves
- PPE impact resistant goggles
- RPE dust mask
- Tape measure



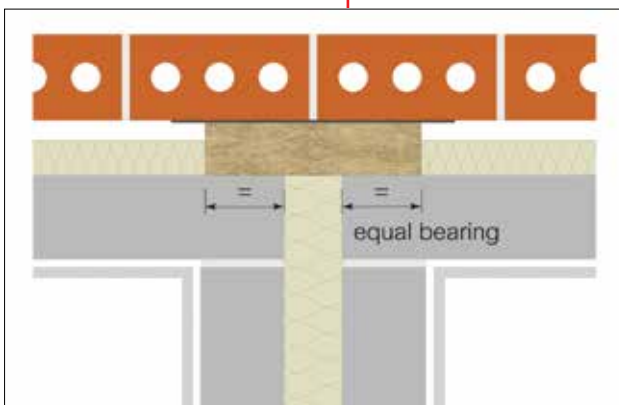
INSTALLATION GUIDELINES



Check that the Party Wall Fire Closer is the correct size for the cavity. The Closer should be 5% larger than the cavity.



Check the width of the Party Wall Fire Closer. It must have a minimum bearing of 75mm for 1 hour and a minimum bearing of 100mm for 2 hours.



Fit the Party Wall Fire Closer with the DPC facing the external leaf and with the 100mm tail pointing downwards. Ensure there is an equal bearing to both sides of the party wall cavity.



When installing multiple sections of Party Wall Fire Closer the DPC tail should overlap the DPC on the section below to prevent any risk of water ingress.

MAINTENANCE

This product does not contain moving parts and, if undisturbed in the cavity, requires no routine inspections or maintenance.

It is recommended that the integrity of the barrier is rechecked if further works are carried out, which may involve disturbing the product.