

Angle Fillet for Flat Roofing

AIM Angle Fillets are designed to help ease the installation of waterproofing membranes at the edge of the flat roof.



Technical Guide

APPLICATIONS

AIM Angle Fillets are designed to reduce the corner angle from 90° to 45° where there are horizontal and vertical abutments on a flat roof which is being waterproofed with a membrane system.

FEATURES

- Available in mineral wool, PIR, XPS and EPS insulation materials.
- Triangular or truncated profiles.

BENEFITS

- Reduces the angle between horizontal and vertical for ease of installation of the waterproofing membrane.
- Choice of insulation materials to suit the waterproofing system being used.

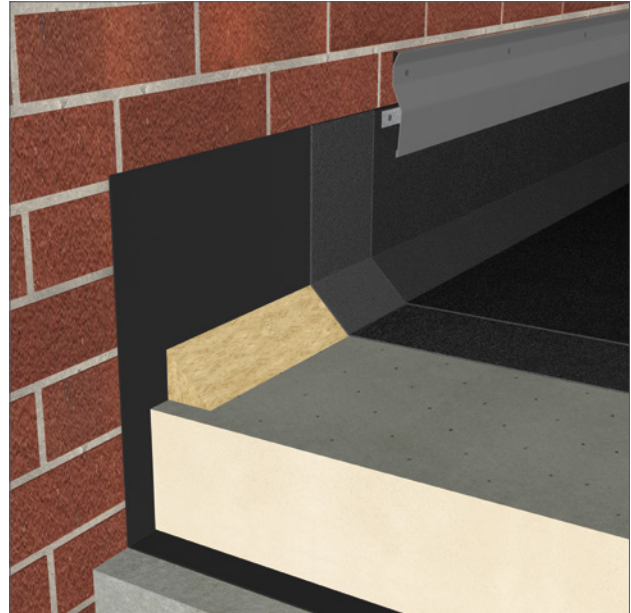
PHYSICAL INFORMATION

- Lengths: 1000mm
- Standard size: 50 x 50mm (triangular or truncated)*
- 108 linear metres / lengths to a standard carton
- Mineral wool variants have a Euroclass A1 rating.
- Mineral wool variants available either plain finished or tissue faced.
- PIR variants available with a paper facing (truncated profile only)
- XPS and EPS supplied without facings.
- Any size fillet can be cut to order
- Mineral wool, PIR, XPS and EPS variants are deemed to be rot resistant.

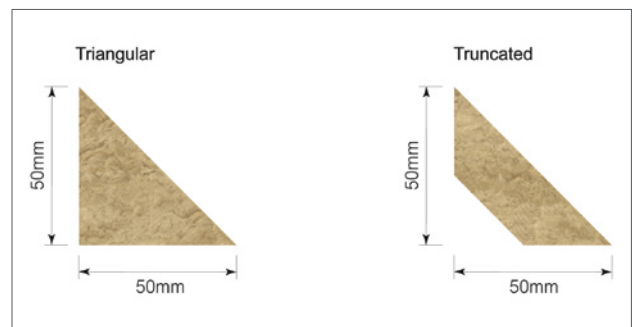
AIM Angle Fillets are primarily manufactured from Rock Mineral wool although they can also be manufactured from PIR, XPS or EPS insulation.

Profiles can be triangular or truncated, as shown in the image to the right, and cut to any dimension as per the specification.

* PIR only available in the truncated profile.



Example product installation schematic using materials by others



PACKAGING

- AIM Cavity Fire Closers are generally packed into cartons and stretch wrapped onto wooden pallets with a showerproof polythene pallet cover and high quality edge protectors.

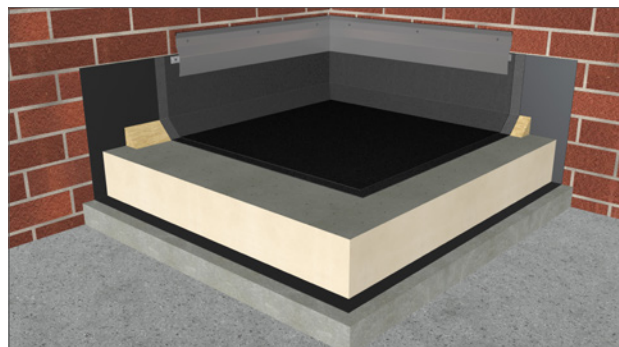
ITEMS REQUIRED FOR INSTALLATION

Personal Protective Equipment (PPE) required includes

- Abrasion resistant gloves
- Impact resistant goggles
- Dust mask

INSTALLATION

Generally the AIM Angle fillet is simply fitted into the corner between the horizontal and vertical elements of the roof application and held in place by the waterproofing membrane. They do not need to be fixed or adhered in situ although bonding with an appropriate adhesive is possible.



AIM are partners with NBS. Our products can be found on NBS Source and have been authored to NBS specification standards and have both CAWS and Uniclass 2015 classifications.

STORAGE

Products are supplied in cartons on wooden pallets with edge protection and a shower proof hood. Products should be stored away from the elements until ready for installation.

MAINTENANCE

This product does not contain moving parts and, if undisturbed in the cavity, requires no routine inspections or maintenance.

DURABILITY

AIM Angle Fillets are chemically inert, will not sustain vermin and do not encourage the growth of rot, fungi, moulds or bacteria. They are compatible with all normal building materials. They do not degrade under the usual conditions found in buildings and will perform effectively for the life of the building.

HEALTH & SAFETY

Insulation products supplied by AIM are considered to be inert articles and as such are exempt from requirements to provide a Safety Data Sheet.

Product Safety and Handling Information Sheets are available covering the various insulants and facing board used.

ENVIRONMENT

Global warming potential = zero

For product recycling of stone wool based variants, please contact: Rockwool T: 01656 868400
E: recycling@rockwool.co.uk where the insulation used is Rockwool stone wool.

There are very limited recycling facilities for plastic insulation materials such as PIR, EPS and XPS. At the end of life it is likely that the most appropriate method of disposal of the material would be to local waste recycling facilities.

ORDERING

To order this product the following information will be required:

- Insulation material required (Rock Mineral Wool, PIR, XPS or EPS).
- Profile required and / or dimensions if not a standard 50 x 50mm triangular profile.
- Approximate quantity in linear metres.
- Delivery location.

All AIM Angle Fillets are made to order. Products are typically supplied in seven to ten working days but lead times may vary depending on existing factory commitments.

There is no minimum order quantity or value although small orders may attract transport surcharges.

TECHNICAL SUPPORT

Technical Support is available from our experienced sales team on 01293 582 400 or sales@aimlimited.co.uk

ABOUT AIM

AIM are a quality insulation convertor with over 30 years experience in the design, testing & manufacturing of high quality fire barriers for customers worldwide.