

# Partition Head Fire Barrier

Maintain the fire compartment above partitions and masonry walls.

## Technical Guide

### PRODUCT

AIM Partition Head Fire Barrier is made from foil faced high density Rockwool stone wool and provides a fire and acoustic barrier above fire rated walls.

### APPLICATIONS

AIM Partition Head Fire Barrier provides a fire and acoustic barrier above fire rated metal frame partitions, fire rated timber partitions and masonry walls.

The AIM Partition Head Fire Barrier is suitable for applications where fire rated partitions do not extend the full height to the soffit above and to reduce the passage of sound over partition lines.

### FEATURES

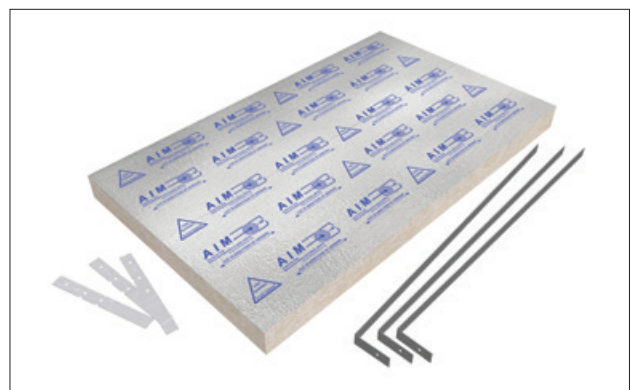
- Foil faced stone wool barrier supplied complete with required fixings.
- Voids up to 600mm.
- At least 21 dB  $R_w$  acoustic insulation.

### BENEFITS

- Simple solution for maintaining compartment lines above walls and partitions.
- Provides 1 hour fire resistance (Insulation and integrity).
- Contributes to sound reduction between rooms.



Example product installation schematic using materials by others



## COMPONENTS available from AIM



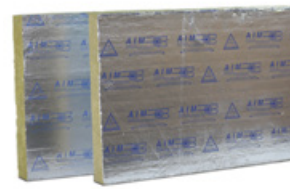
Fixing Clip  
Two fixing clips per length  
of barrier



Link Strap  
2 per length for voids  
over 300mm



Acrylic fire rated intumescent mastic  
(optional extra)

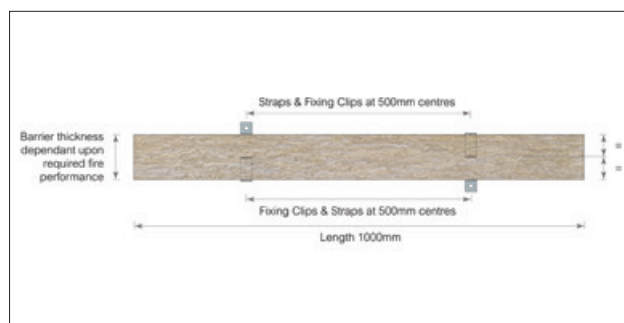
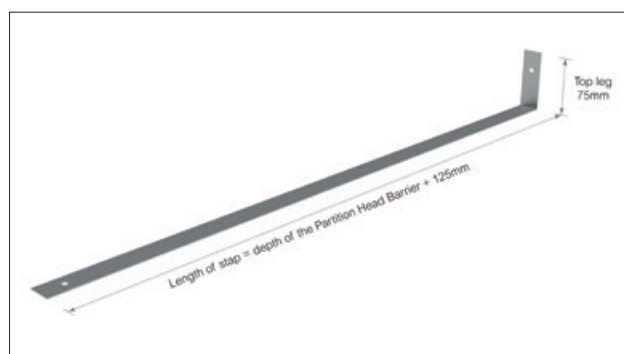
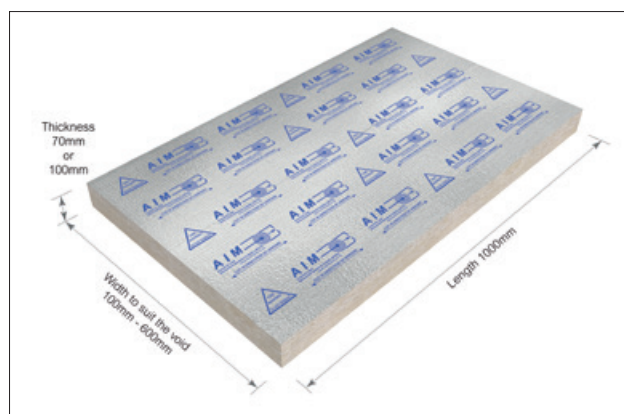


Barrier

## PHYSICAL INFORMATION

- Lengths: 1000mm
- Voids: 100 - 600mm\*
- AIM Partition Head Fire Barriers are supplied to suit the void size and cut allowing a 5% compression fit.
- 70 and 90mm thicknesses
- No mastics or sealants required
- Tested to EN1366-4

\* The AIM Fire Stop Strip is available for voids of less than 100mm.



## PACKAGING

AIM Cavity Fire Closers are generally packed into cartons and stretch wrapped onto wooden pallets with a showerproof polythene pallet cover and high quality edge protectors.

## AS STANDARD

AIM Partition Head Fire Barriers are supplied to suit the void size and cut allowing a 5% compression fit.

## OPTIONS

AIM Partition Head Fire Barriers are supplied cut to size to suit the void size to be filled.

## TECHNICAL INFORMATION

### Fire Performance

AIM Partition Head Fire Barriers provide 1 hour fire resistance (Insulation and integrity).

A 70mm thick barrier is required for voids up to 300mm.

A 90mm thick barrier is required for voids of 301 to 600mm.

AIM Partition Head Fire Barriers have been tested for use above a variety of wall constructions including flexible walls such as metal stud and plasterboard systems, timber stud partitions and masonry walls.

### Acoustic Performance

AIM Partition Head Fire Barriers provide at least 21 dB  $R_w$  acoustic insulation.

## TEST REPORTS

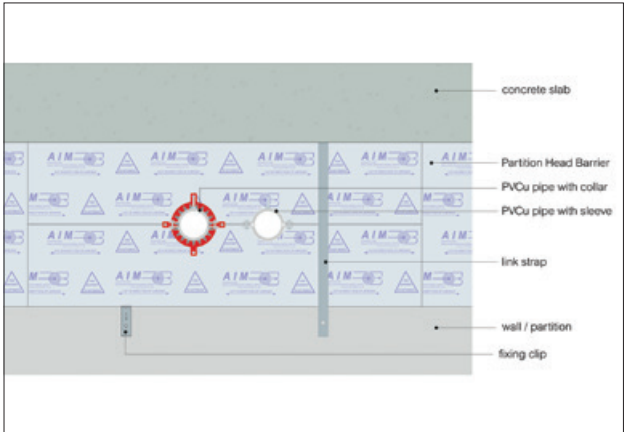
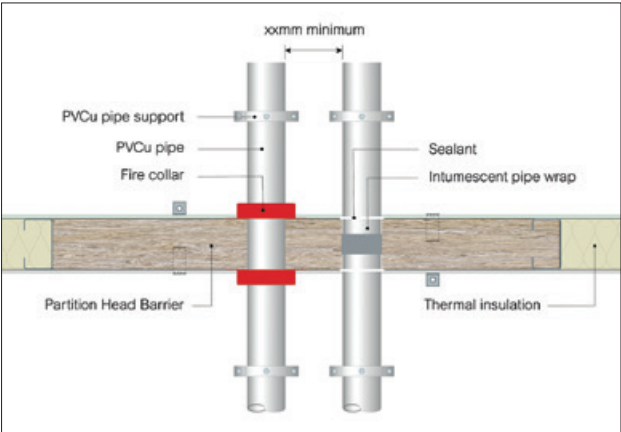
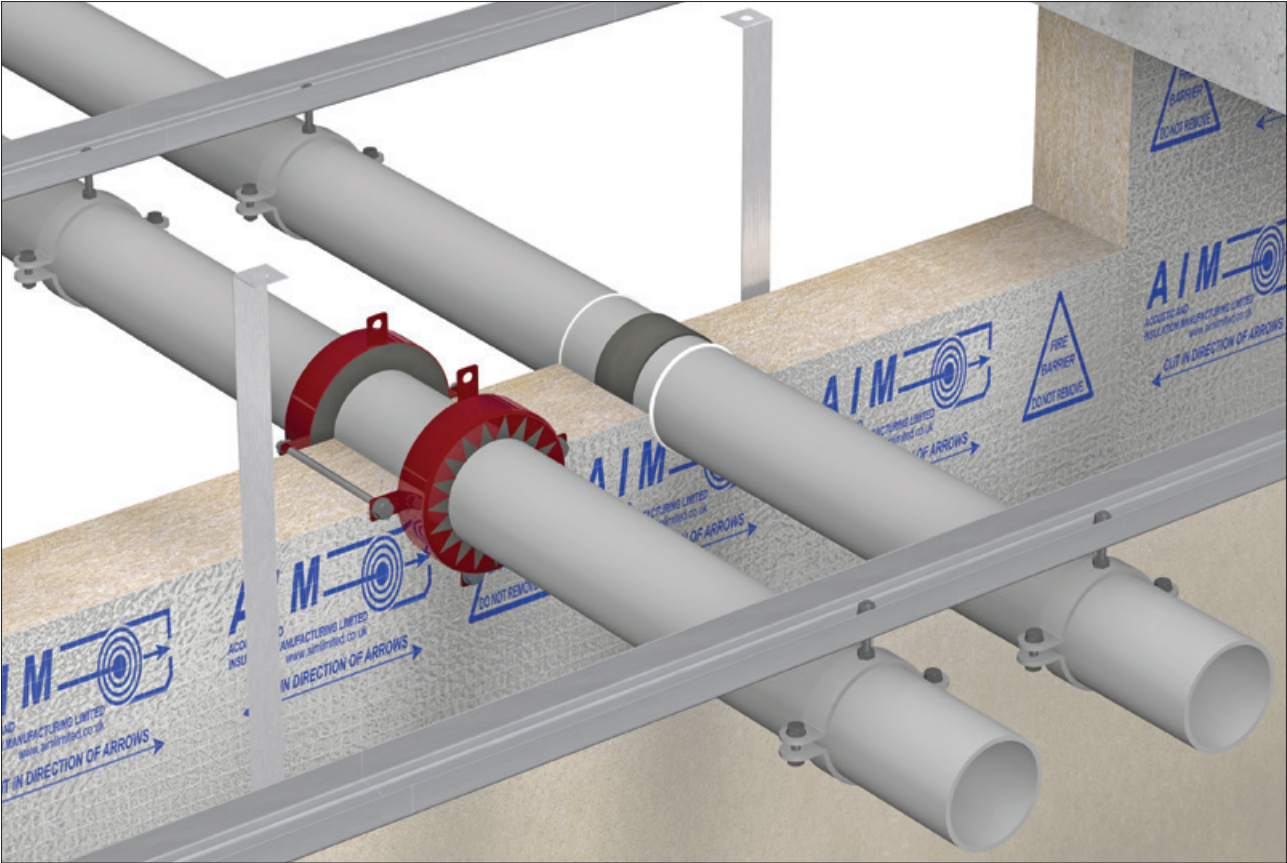
WF 399461.

Z11012 – Acoustic Performance – Testing on mineral fibre insulation. To BS EN ISO 10140-2

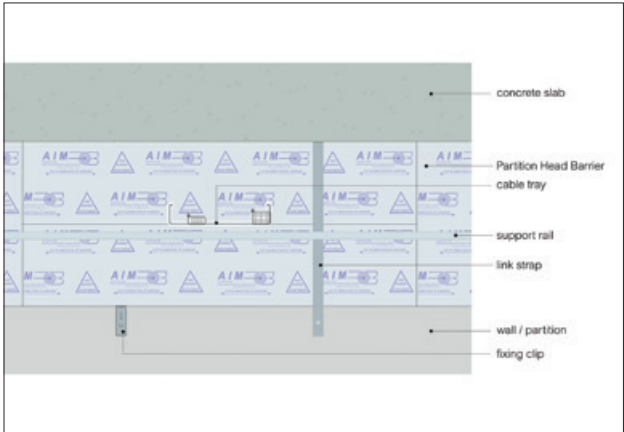
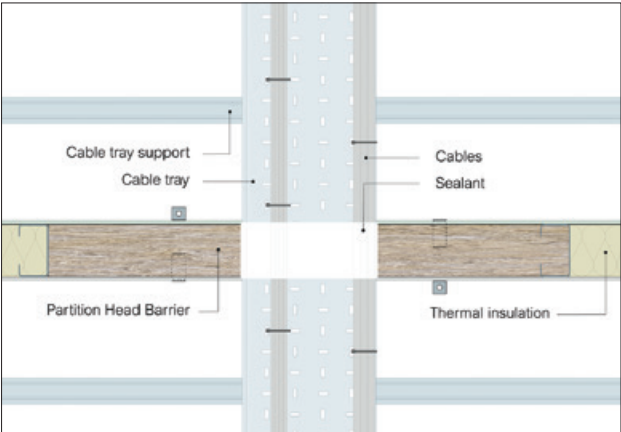
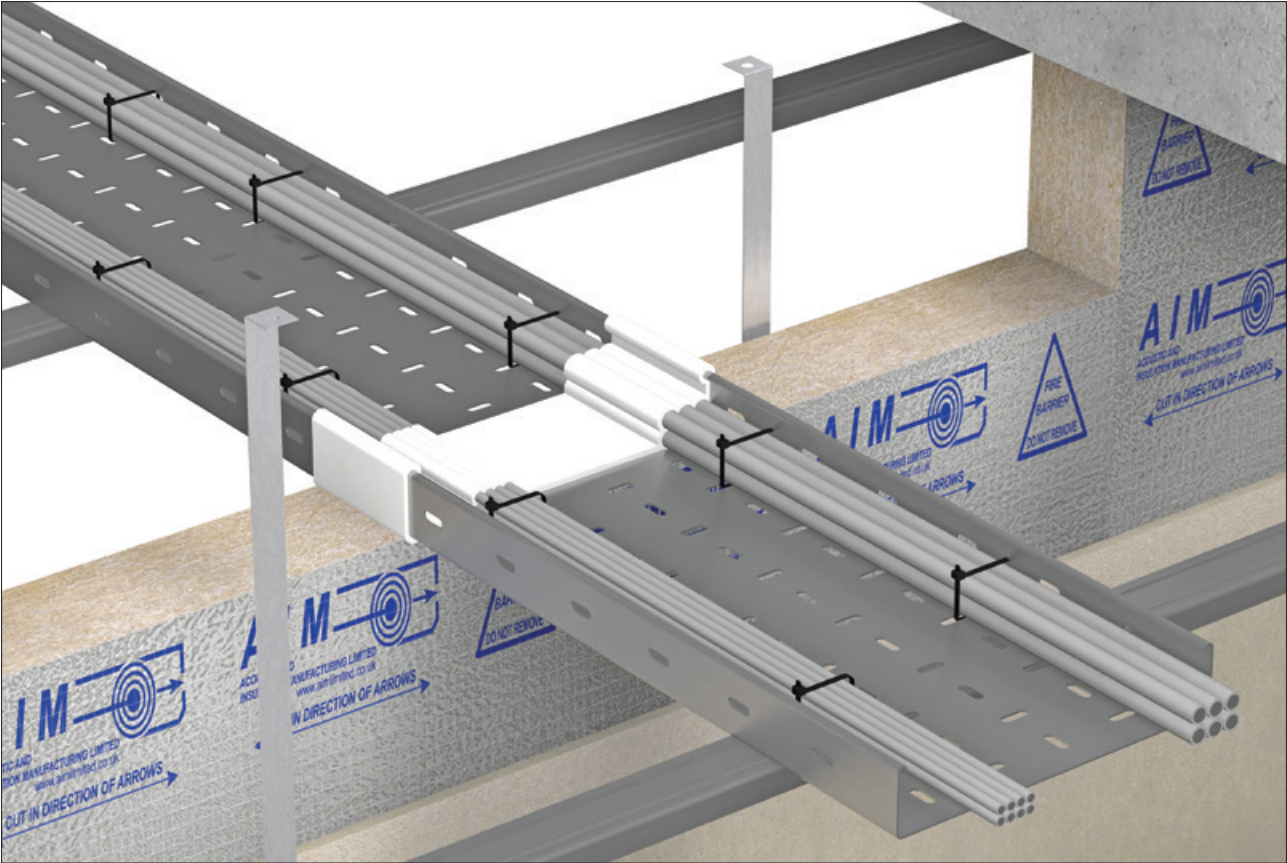


AIM are partners with NBS. Our products can be found on NBS Source and have been authored to NBS specification standards and have both CAWS and Uniclass 2015 classifications.

SERVICE PENETRATIONS - PIPES



SERVICE PENETRATIONS - CABLES



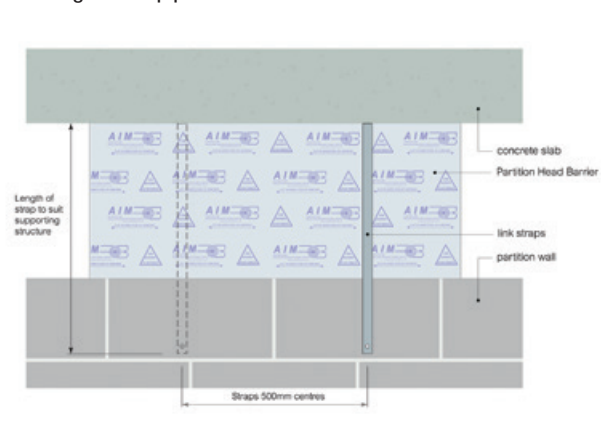
## INSTALLATION GUIDELINES

In a fire situation a partition may bow significantly due to the heat of the fire on one side with the result that the partition head may move laterally to a significant degree. AIM Partition Head Fire Barrier has been tested with a flexible wall construction and is supplied with a clip system to prevent the possibility of it being dislodged and therefore ineffective in a fire situation. For voids over 300mm link straps are supplied in addition to clips in order to restrain lateral movement of the partition head.

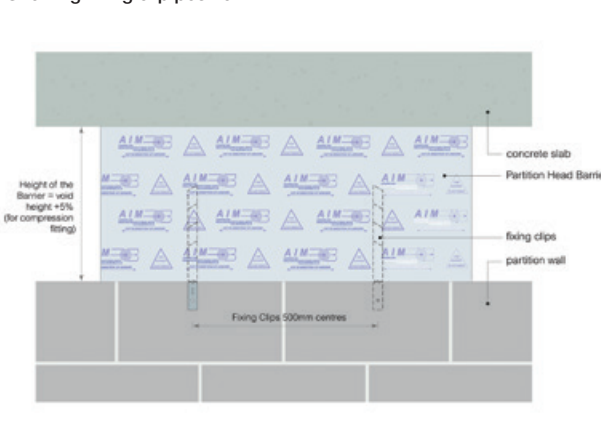
Two clips are inserted into the base of each length of AIM Partition Head Fire Barrier. The barrier is push fitted into place and it must fit tightly and completely; the clips are then screwed to the top of the partition or wall.

The Barrier must be compressed by about 5% when installed. The maximum void size is 600mm. Where the gap exceeds 300mm, the top of the partition or wall must be securely fixed by steel fixings to the soffit using steel link straps.

Showing link strap position



Showing fixing clip position



## Items required for installation



PPE abrasion resistant gloves



PPE impact resistant goggles



RPE dust mask



Drill



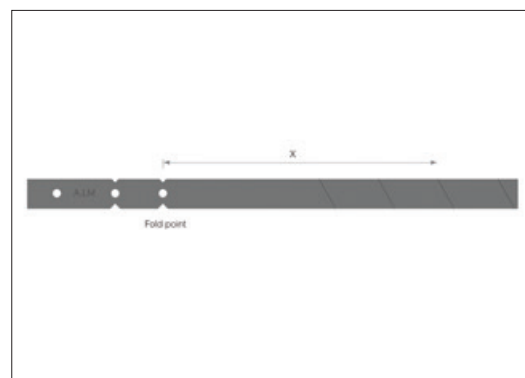
Screwdriver



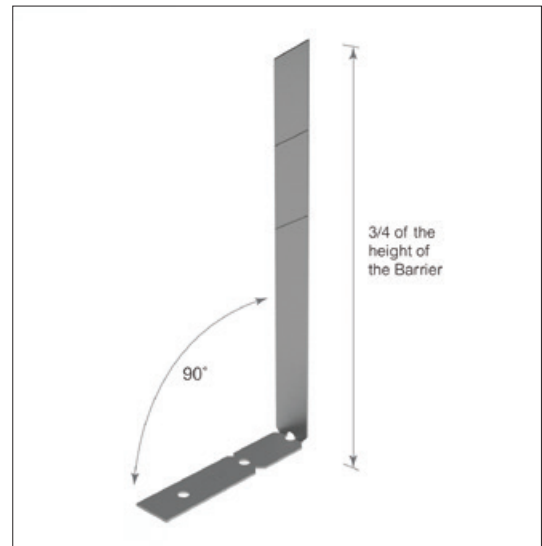
Tape measure

1

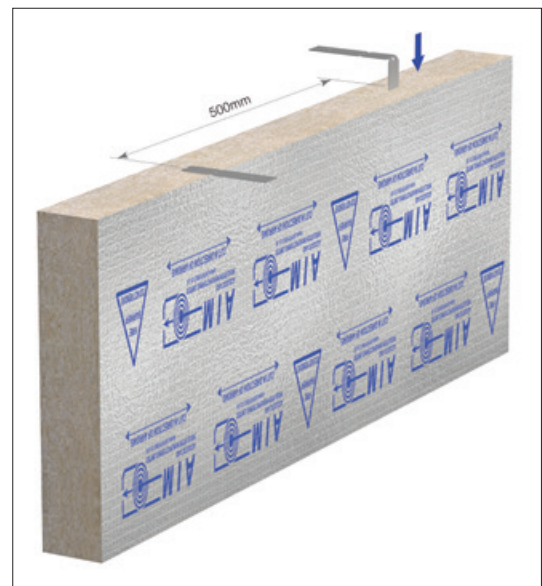
Snap the fixing clips to the correct length. Dimension X should be three quarters of the barrier's height.



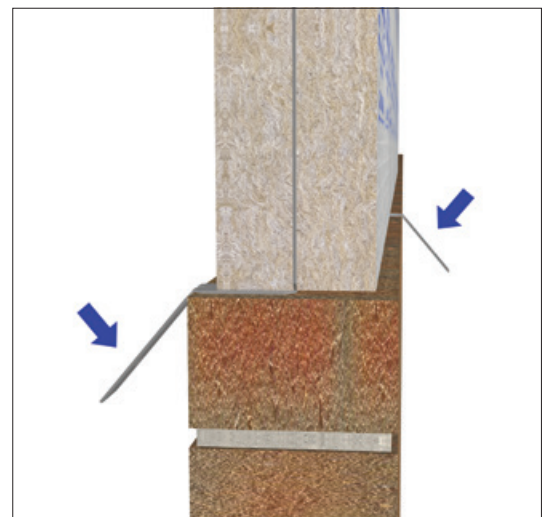
- 2** Form two fixing clips to 90° to form an L shape.



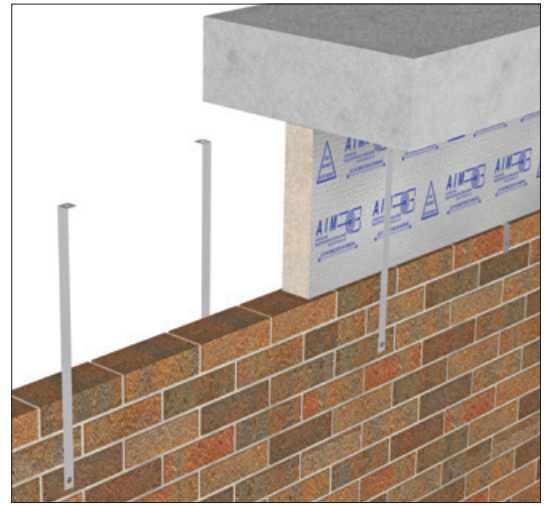
- 3** Insert two fixing clips into the barrier at 500mm centres approximately 250mm from each end.



- 4** Fit the barrier under 5% compression between the head of the wall and soffit above. Fold the two fixing clips downwards and secure these to the top of the wall or partition.



- 5** If the barrier is installed into a cavity over 300mm, link straps will be required at 500mm centres to either side of the barrier.



- 6** The link straps should be fitted in line with the fixing clips on the opposite side.



- 7** Check for any gaps or voids. Any gaps or voids at either the bottom or top of the barrier should be sealed with intumescent mastic.



- 8** If the wall or partition is wider than the barrier then seal the junction between the barrier and wall head.



## STORAGE

Products are supplied in cartons on wooden pallets with edge protection and a shower proof hood. Products should be stored away from the elements until ready for installation.

## MAINTENANCE

This product does not contain moving parts and, if undisturbed in the cavity, requires no routine inspections or maintenance.

It is recommended that the integrity of the barrier is rechecked if further works are carried out, which may involve disturbing the product.

## DURABILITY

AIM fire barriers are chemically inert, will not sustain vermin and do not encourage the growth of rot, fungi, moulds or bacteria. They are compatible with all normal building materials. Rockwool stone wool has been proven in service for over 60 years, in a wide range of climates and degrees of exposure. It will generally perform effectively for the lifetime of the building, plant or structure.

## HEALTH & SAFETY

Insulation products supplied by AIM are considered to be inert articles and as such are exempt from requirements to provide a Safety Data Sheet.

A Product Safety and Handling Information Sheet is available upon request.

## ENVIRONMENT

Global warming potential = zero

For product recycling please contact: Rockwool  
T: 01656 868400 E: [recycling@rockwool.co.uk](mailto:recycling@rockwool.co.uk)

## ORDERING

To order this product the following information will be required:

- Cavity depth in mm
- Approximate quantity
- Delivery location

All AIM fire barriers are made to order. Products are typically supplied in seven to ten working days but lead times may vary depending on existing factory commitments.

There is no minimum order quantity or value although small orders may attract transport surcharges.

## TECHNICAL SUPPORT

Technical Support is available from our experienced sales team on 01293 582 400 or [sales@aimlimited.co.uk](mailto:sales@aimlimited.co.uk)

## ABOUT AIM

AIM are a quality insulation convertor with over 30 years experience in the design, testing & manufacturing of high quality fire barriers for customers worldwide.

AIM are members of



AIM working in partnership with



T 01293 582400  
E [sales@aimlimited.co.uk](mailto:sales@aimlimited.co.uk)  
W [www.aimlimited.co.uk](http://www.aimlimited.co.uk)