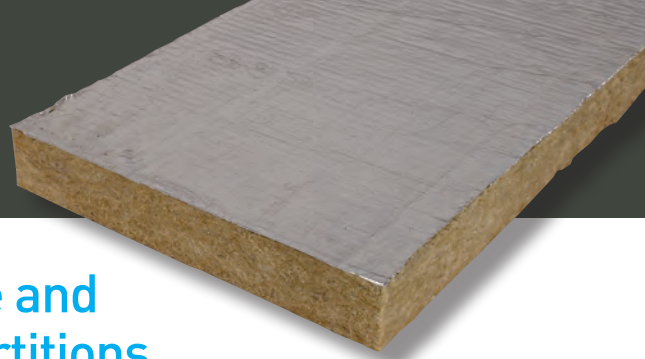
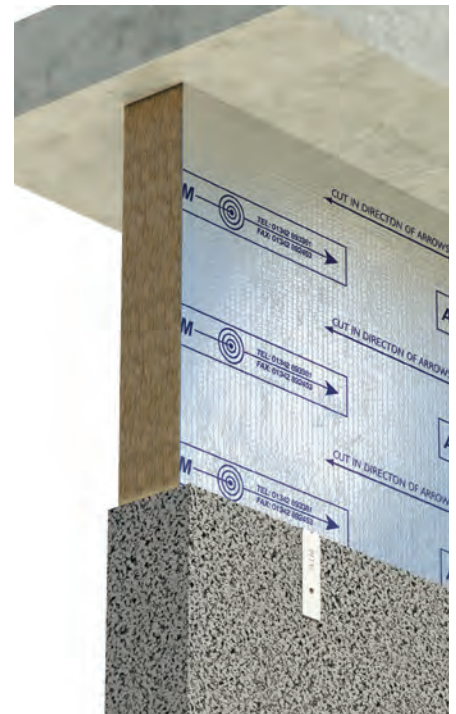


AIM Partition Head Fire Barrier



Foil Faced Rockwool stone wool Fire and Smoke Stop for large gaps above partitions and masonry walls



AIM Partition Head Fire Barrier is made from foil faced high density Rockwool stone wool and provides a fire barrier above fire rated metal frame partitions, fire rated timber partitions and masonry walls.

ROCKWOOL®

In a fire situation a partition may bow appreciably due to the heat of the fire on one side with the result that the partition head may move laterally to a significant degree. AIM Partition Head Fire Barrier is supplied with a clip system to prevent the possibility of it being dislodged and therefore ineffective in a fire situation. For voids over 250mm link straps are supplied in addition to clips in order to restrain lateral movement of the partition head.

Specification

Lengths: 1000mm

Voids: 100 - 600mm (Less than 100mm use AIM Fire Stop Strip)

- No mastics or sealants required
- Tested to BS 476 part 20 and assessed by Warrington Fire Research Centre
- Non-combustible to EN13501-1 and classified A1
- Complies with performance requirements of Class O Building Regulations
- Global Warming potential = zero
- No CFCs or HCFCs used in manufacture

Fire Performance

The performance of AIM Partition Head Fire Barrier has been tested to BS 476 part 20 assessed by Warrington Fire Research Centre.

Fire Resistance Minutes	Minimum Thickness of Fire Barrier mm	
	Gaps 101 → 300mm	Gaps 301 → 600mm
30	50	75
60	75	100
120	100	100 with lap joint
240	100 EHD*	NA

*EHD = Extra high density barrier with lap joints

Thickness is measured as the distance between one compartment and the next, which the fire stop or barrier is separating.

Installation

Two clips are inserted into the base of each length of AIM Partition Head Fire Barrier. The barrier is push fitted into place and it must fit tightly and completely; the clips are then screwed to the top of the partition or wall.

The Barrier must be compressed by about 5% when installed. The maximum void size is 600mm. Where the gap exceeds 250mm, the top of the partition or wall must be securely fixed by steel fixings to the soffit using steel link straps (see diagram).